

2nd Grade Math
Benchmark
Assessment

2nd GRADE BENCHMARK TEST

1. What number is missing on the strip?

52	51	50	—	48
----	----	----	---	----

- A. 47
B. 49
C. 53
D. 39
2. What is the next number in the sequence?

20, 40, 60, 80, ____

- A. 90
B. 100
C. 110
D. 81
3. Which shows the numbers in order from least to greatest?

562, 67, 519, 613, 526

- A. 67, 526, 519, 613, 562
B. 613, 562, 526, 519, 67
C. 519, 67, 562, 613, 526
D. 67, 519, 526, 562, 613
4. Use the clues to find the number:
It has a 6 in the tens digit.
It has a 3 in the ones digit.
It has a 7 in the hundreds digit.

- A. 637
B. 673
C. 736
D. 763

5. What do the coins add up to?



- A. \$0.71
 - B. \$0.51
 - C. \$0.76
 - D. \$0.27
6. _____ + 5 = 13
- A. 7
 - B. 18
 - C. 9
 - D. 8
7. Which combination does not make 5?
- A. 12 - 7
 - B. 13 - 8
 - C. 15 - 9
 - D. 10 - 5
8. Sally had 36 pennies. She found 12 more pennies.
- $36 + 12$
- How many pennies does Sally have now?
- A. 58
 - B. 47
 - C. 24
 - D. 48

9. On Saturday, Jane and Ellie counted animals at the zoo. They counted 62 birds and 18 monkeys.

$$62 + 18$$

How many animals did they count?

- A. 70
 - B. 80
 - C. 81
 - D. 43
10. The teacher had 35 new pencils. She gave out 8 pencils.

$$35 - 8$$

How many pencils does she have left?

- A. 27
 - B. 33
 - C. 43
 - D. 28
11. Which number combination does not make 13?

- A. $3 + 4 + 6$
- B. $5 + 6 + 2$
- C. $6 + 6 + 1$
- D. $5 + 4 + 3$

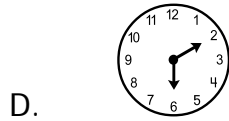
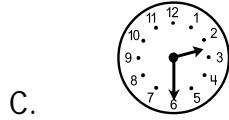
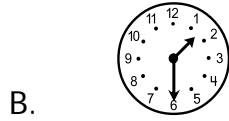
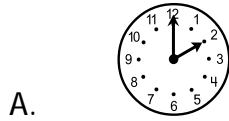
12. Kim made 74 snowballs for the big snowball fight. Sally made 23 snowballs.

How many more snowballs did Kim make?

- A. 57
- B. 51
- C. 49
- D. 97

- 13. The zoo has 37 animal posters and 22 insect posters.**
About (estimate) how many posters does the zoo have in all?
- A. 50
 - B. 59
 - C. 60
 - D. 69
- 14. Round 32 to the nearest 10.**
- A. 35
 - B. 20
 - C. 30
 - D. 40
- 15. Debbie wants to measure the temperature of her room. Which tool will she use?**
- A. balance
 - B. cup
 - C. ruler
 - D. thermometer
- 16. About how long is a new pencil?**
- A. 8 inches
 - B. 4 ft.
 - C. 2 inches
 - D. 2 ft.

17. P.E. starts at 2:30. Which clock shows the time P.E. starts?



18. What is the date of the 2nd Thursday in April?

April						
S	M	T	W	Th	F	S
			1	2	3	4
5	6	7	8	9	10	11
12	13	14	15	16	17	18
19	20	21	22	23	24	25
26	27	28	29	30		

- A. April 14th
- B. April 7th
- C. April 9th
- D. April 16th

19. Frank had 17 dimes. He found 17 more dimes when he was cleaning his closet.

Which addition sentence shows how many dimes he has now?

A. $34 + 17 = 51$

B.
$$\begin{array}{r} 17 \\ +17 \\ \hline 36 \end{array}$$

C.
$$\begin{array}{r} 17 \\ +17 \\ \hline 34 \end{array}$$

D. $17 - 17 = 0$

20. Which of these fact families is correct?

A. $8 + 7 = 15$ $15 - 15 = 0$
 $7 + 8 = 15$ $15 - 7 = 8$

B. $8 + 1 = 7$ $7 + 1 = 8$
 $8 - 1 = 7$ $8 - 7 = 1$

C. $8 + 7 = 15$ $7 + 8 = 15$
 $15 - 7 = 8$ $15 - 8 = 7$

D. $8 - 7 = 1$ $8 + 7 = 15$
 $7 - 8 = 1$ $7 + 8 = 15$

21. Which of the following number sentences is true?

A. $687 < 678$

B. $768 < 678$

C. $678 = 678$

D. $678 > 687$

22. Matt had 2 baseball cards, then he found some more under his bed. Now he has 8 baseball cards.

$$2 + \square = 8$$

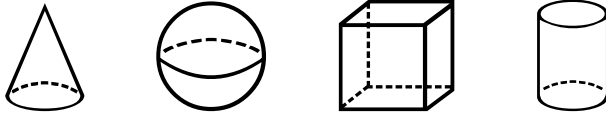
How many baseball cards did Matt find?

- A. 2
 - B. 6
 - C. 8
 - D. 10
23. Larry had 26 socks. He lost a few in the wash. He still has an even number of socks.

Which number below shows an even number of socks?

- A. 27
 - B. 23
 - C. 22
 - D. 19
24. Which of the following patterns shows the rule add 5?
- A. 2, 6, 10, 14
 - B. 7, 10, 13, 16
 - C. 9, 11, 13, 15
 - D. 3, 8, 13, 18

25. What is the correct order of these solids?

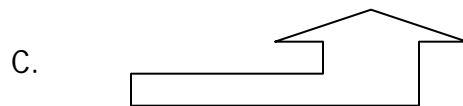
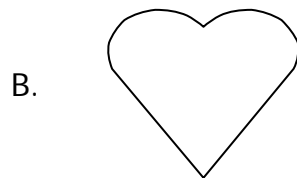
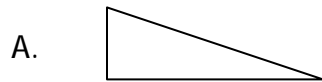


- A. cube, cylinder, sphere, cone
- B. cone, cube, cylinder, sphere
- C. sphere, cylinder, cube, cone
- D. cone, sphere, cube, cylinder

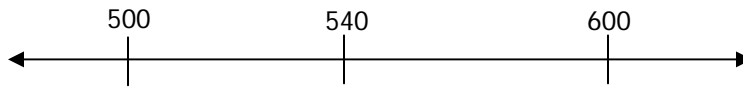
26. Which shape has 4 equal sides?

- A. rectangle
- B. circle
- C. triangle
- D. square

27. Which figure shows a line of symmetry?



28. Which of the following numbers is below 530 on a number line?



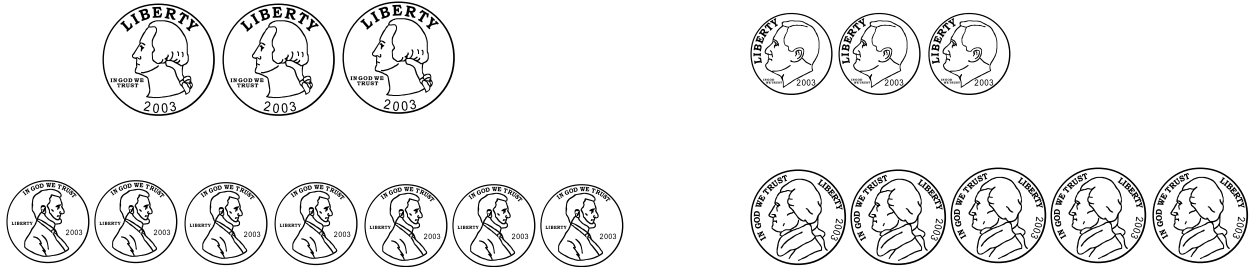
- A. 532
- B. 552
- C. 527
- D. 598

29. How many children answered the question, "Which fruit do you like best"?

6 children like apples
3 children like grapes
11 children like oranges

- A. 20
- B. 19
- C. 22
- D. 17

30. Bobby emptied his piggy bank and counted the number of coins he had.



Which of the following correctly shows the data in a tally chart?

A.

Quarters	
Dimes	
Nickels	////
Pennies	////

B.

Quarters	
Dimes	
Nickels	////
Pennies	////

C.

Quarters	
Dimes	
Nickels	
Pennies	////

D.

Quarters	////
Dimes	
Nickels	////
Pennies	////

Grade 2 – Form B
Elementary Math Benchmark Assessment

Student Response Form

1. _____

2. _____

3. _____

4. _____

5. _____

6. _____

7. _____

8. _____

9. _____

10. _____

11. _____

12. _____

13. _____

14. _____

15. _____

16. _____

17. _____

18. _____

19. _____

20. _____

21. _____

22. _____

23. _____

24. _____

25. _____

26. _____

27. _____

28. _____

29. _____

30. _____

**Grade 2 – Form B
Elementary Math Benchmark Assessment**

Answer Key

- | | |
|--------------|--------------|
| 1. B | 16. A |
| 2. B | 17. C |
| 3. D | 18. C |
| 4. D | 19. C |
| 5. A | 20. C |
| 6. D | 21. C |
| 7. C | 22. B |
| 8. D | 23. C |
| 9. B | 24. D |
| 10. A | 25. D |
| 11. D | 26. D |
| 12. B | 27. B |
| 13. C | 28. C |
| 14. C | 29. A |
| 15. D | 30. B |