

2nd Grade Math
Benchmark
Assessment

2nd GRADE BENCHMARK TEST

1. What number is missing on the strip?

32	34	—	38	40
----	----	---	----	----

- A. 46
B. 36
C. 37
D. 35
2. What is the next number in the sequence?

110, 130, 150, —

- A. 120
B. 170
C. 200
D. 1500
3. Which shows the numbers in order from greatest to least?

4, 44, 404, 434, 440

- A. 440, 4, 44, 404, 434
B. 434, 440, 44, 4, 404
C. 440, 434, 404, 44, 4
D. 4, 44, 404, 434, 440
4. Use the clues to find the number:
It has a 4 in the ones digit.
It has a 9 in the hundreds digit.
It has a 6 in the tens digit.

- A. 694
B. 964
C. 469
D. 946

5. What do the coins add up to?



- A. \$0.73
- B. \$0.68
- C. \$0.63
- D. \$0.88

6. $14 = \underline{\quad} + 8$

- A. 7
- B. 14
- C. 22
- D. 6

7. Which combination does not make 7?

- A. $10 - 3$
- B. $11 - 4$
- C. $14 - 7$
- D. $17 - 8$

8. Sally had 54 pennies. She found 23 more pennies.

$$54 + 23$$

How many pennies does Sally have now?

- A. 64
- B. 73
- C. 87
- D. 77

9. On Saturday, Jane and Ellie counted animals at the zoo. They counted 44 birds and 18 monkeys.

$$44 + 18$$

How many animals did they count?

- A. 18
 - B. 44
 - C. 53
 - D. 62
10. The teacher had 48 new markers. She gave out 23 markers.

$$48 - 23$$

How many markers does she have left?

- A. 5
 - B. 25
 - C. 15
 - D. 71
11. Which number combination does not make 15?

- A. $3 + 4 + 5$
- B. $5 + 5 + 5$
- C. $6 + 6 + 3$
- D. $8 + 4 + 3$

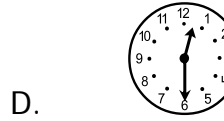
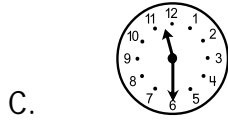
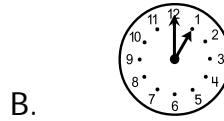
12. Kim made 54 snowballs for the big snowball fight. Sally made 22 snowballs.

How many more snowballs did Kim make?

- A. 32
- B. 76
- C. 36
- D. 34

- 13. The zoo has 46 animal posters and 33 insect posters.**
About (estimate) how many posters does the zoo have in all?
- A. 89
 - B. 70
 - C. 79
 - D. 13
- 14. Round 47 to the nearest 10.**
- A. 60
 - B. 50
 - C. 55
 - D. 80
- 15. Debbie wants to know how long recess is. Which tool will she use?**
- A. balance
 - B. clock
 - C. ruler
 - D. thermometer
- 16. About how long does it take you to brush your teeth?**
- A. 1 hour
 - B. 30 minutes
 - C. 3 minutes
 - D. 1 day

17. Lunch starts at 12:00. Which clock shows the time lunch starts?



18. What is the date of the 3rd Saturday in April?

April						
S	M	T	W	Th	F	S
			1	2	3	4
5	6	7	8	9	10	11
12	13	14	15	16	17	18
19	20	21	22	23	24	25
26	27	28	29	30		

- A. April 14th
 - B. April 12th
 - C. April 9th
 - D. April 18th
19. Frank had 38 pennies. He found 27 more pennies when he was cleaning his closet.

Which addition sentence shows how many pennies he has now?

A. $38 + 27 = 65$

B.
$$\begin{array}{r} 38 \\ - 27 \\ \hline 11 \end{array}$$

C.
$$\begin{array}{r} 38 \\ + 27 \\ \hline 56 \end{array}$$

D. $38 - 27 = 12$

20. Which of these fact families is correct?

A. $3 + 5 = 7$ $7 + 5 = 12$
 $13 - 7 = 5$ $7 - 7 = 0$

B. $12 + 5 = 7$ $5 + 5 = 10$
 $7 - 7 = 0$ $5 - 3 = 2$

C. $7 + 5 = 12$ $5 + 7 = 12$
 $12 - 5 = 7$ $12 - 5 = 7$

D. $3 + 5 = 7$ $3 - 5 = 7$
 $5 + 3 = 7$ $5 - 3 = 7$

21. Which of the following number sentences is true?

A. $587 < 857$

B. $785 < 587$

C. $785 = 758$

D. $857 > 875$

22. Jane had 2 stickers, then she found some more under her bed. Now she has 5 stickers.

$$2 + \square = 5$$

How many stickers did Jane find?

A. 2

B. 5

C. 3

D. 7

23. Larry had 20 socks. He lost a few in the wash. Now he has an odd number of socks.

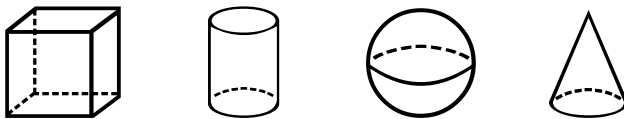
Which number below shows an odd number of socks?

- A. 18
- B. 14
- C. 15
- D. 10

24. Which of the following patterns shows the rule add 4?

- A. 8, 12, 16, 20
- B. 6, 11, 16, 21
- C. 4, 7, 10, 12
- D. 3, 10, 17, 24

25. What is the correct order of these solids?

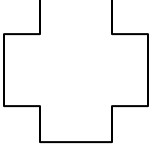
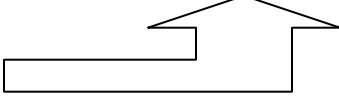
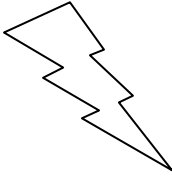
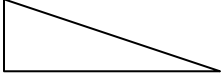


- A. sphere, cylinder, cube, cone
- B. cone, sphere, cube, cylinder
- C. cone, cube, cylinder, sphere
- D. cube, cylinder, sphere, cone

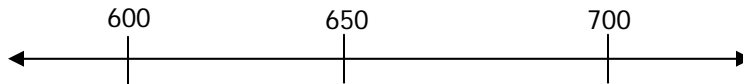
26. Which shape has no sides?

- A. rectangle
- B. circle
- C. triangle
- D. square

27. Which figure shows a line of symmetry?

- A. 
- B. 
- C. 
- D. 

28. Which of the following numbers is below 650 on a number line?

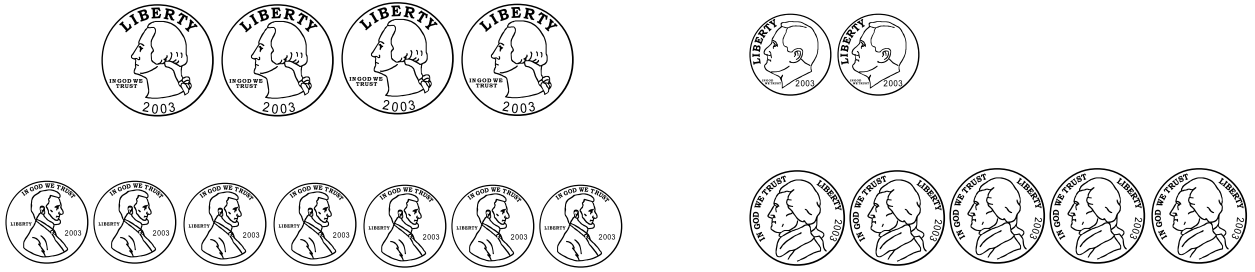


- A. 632
 - B. 652
 - C. 660
 - D. 682
29. How many children answered the question, "Which fruit do you like best"?

9 children like apples
4 children like grapes
8 children like oranges

- A. 21
- B. 28
- C. 25
- D. 26

30. Bobby emptied his piggy bank and counted the number of coins he had.



Which of the following correctly shows the data in a tally chart?

A.

Quarters	
Dimes	
Nickels	/
Pennies	/

B.

Quarters	
Dimes	
Nickels	
Pennies	

C.

Quarters	
Dimes	
Nickels	
Pennies	/

D.

Quarters	/
Dimes	
Nickels	/
Pennies	/

Grade 2 – Form C
Elementary Math Benchmark Assessment

Student Response Form

1. _____

2. _____

3. _____

4. _____

5. _____

6. _____

7. _____

8. _____

9. _____

10. _____

11. _____

12. _____

13. _____

14. _____

15. _____

16. _____

17. _____

18. _____

19. _____

20. _____

21. _____

22. _____

23. _____

24. _____

25. _____

26. _____

27. _____

28. _____

29. _____

30. _____

**Grade 2 – Form C
Elementary Math Benchmark Assessment**

Answer Key

- | | |
|--------------|--------------|
| 1. B | 16. C |
| 2. B | 17. A |
| 3. C | 18. D |
| 4. B | 19. A |
| 5. B | 20. C |
| 6. D | 21. A |
| 7. D | 22. C |
| 8. D | 23. C |
| 9. D | 24. A |
| 10. B | 25. D |
| 11. A | 26. B |
| 12. A | 27. A |
| 13. C | 28. A |
| 14. B | 29. A |
| 15. B | 30. A |